

**N412 SERIES ENCLOSURES
NEMA 4 & 12 SINGLE DOOR WALL-MOUNT**



N412161206

Industry Standards

UL 508, Types 4, 12, & 13
CSA Certified, Types 4 & 12
NEMA/EEMAC Type 4, 12, & 13
JIC EL-1-71

 UL Files E64791

 CSA File LL66078

FEATURES-SPECIFICATIONS

Applications

Hubbell Wiegmann N412 Series is designed to house and protect electrical and electronic components from harsh, dirty environments. For use in installations where dirt, dust, oil, water, or other contaminants are present. Streamlined styling, flush latching, and attractive durable finish complement any high tech electronic equipment.

Construction

- Bodies and doors fabricated from 14 gauge steel
- Continuously plasma welded seams

- Body stiffeners are included in larger enclosures for added rigidity
- Doors are interchangeable and easily removable
- 1/4-turn semi-flush oil tight latches are supplied to hold door securely closed
- Grounding provisions provided
- Print pocket is provided
- Doors are sealed with poured-in-place polyurethane gasket
- Mounting holes in rear of enclosure**
- Collar studs for mounting **optional** back panel

Finish

- ANSI 61 gray polyester powder inside and out over phosphatized surfaces
- **Optional** back panels are white polyester powder over phosphatized surfaces

Accessories

- **Optional** N412MFK mounting foot kit**
- Back panels (reference tables)
- See pages J1-J19

N412 SERIES SINGLE DOOR ENCLOSURES							
CATALOG NUMBER	BODY/DOOR STEEL GAUGE	ENCLOSURE SIZE H X W X D	BACK PANEL CATALOG NUMBER*	DOOR STIFFENER	BACK PANEL SIZE A X B	C	E
N412121206	14/14	12.00x12.00x6.00 (305x305x152)	NP1212	No	9.00x9.00 (229x229)	6.00 (152)	—
N412161206	14/14	16.00x12.00x6.00 (406x305x152)	NP1612	No	13.00x9.00 (330x229)	8.00 (203)	—
N412161606	14/14	16.00x16.00x6.00 (406x406x152)	NP1616	No	13.00x13.00 (330x330)	8.00 (203)	—
N412162006 ◀	14/14	16.00x20.00x6.00 (406x508x152)	NP2016	No	13.00x17.00 (330x432)	8.00 (203)	—
N412201606	14/14	20.00x16.00x6.00 (508x406x152)	NP2016	No	17.00x13.00 (432x330)	10.00 (254)	—
N412202006	14/14	20.00x20.00x6.00 (508x508x152)	NP2020	No	17.00x17.00 (432x432)	10.00 (254)	—
N412241606 ◀	14/14	24.00x16.00x6.00 (610x406x152)	NP2416	No	21.00x13.00 (533x330)	12.00 (305)	—
N412242006 ◀	14/14	24.00x20.00x6.00 (610x508x152)	NP2420	No	21.00x17.00 (533x432)	12.00 (305)	—
N412242406 ◀	14/14	24.00x24.00x6.00 (610x610x152)	NP2424	No	21.00x21.00 (533x533)	4.00 (102)	16.00 (406)
N412161208 ◀	14/14	16.00x12.00x8.00 (406x305x203)	NP1612	No	13.00x9.00 (330x229)	8.00 (203)	—
N412161608 ◀	14/14	16.00x16.00x8.00 (406x406x203)	NP1616	No	13.00x13.00 (330x330)	8.00 (203)	—
N412162008 ◀	14/14	16.00x20.00x8.00 (406x508x203)	NP2016	No	13.00x17.00 (330x432)	8.00 (203)	—
N412201608	14/14	20.00x16.00x8.00 (508x406x203)	NP2016	No	17.00x13.00 (432x330)	10.00 (254)	—
N412241608	14/14	24.00x16.00x8.00 (610x406x203)	NP2416	No	21.00x13.00 (533x330)	12.00 (305)	—
N412202008	14/14	20.00x20.00x8.00 (508x508x203)	NP2020	No	17.00x17.00 (432x432)	10.00 (254)	—
N412242008	14/14	24.00x20.00x8.00 (610x508x203)	NP2420	No	21.00x17.00 (533x432)	12.00 (305)	—
N412302008	14/14	30.00x20.00x8.00 (762x508x203)	NP3020	No	27.00x17.00 (686x432)	4.00 (102)	22.00 (559)
N412202408	14/14	20.00x24.00x8.00 (508x610x203)	NP2420	No	17.00x21.00 (432x533)	10.00 (254)	—

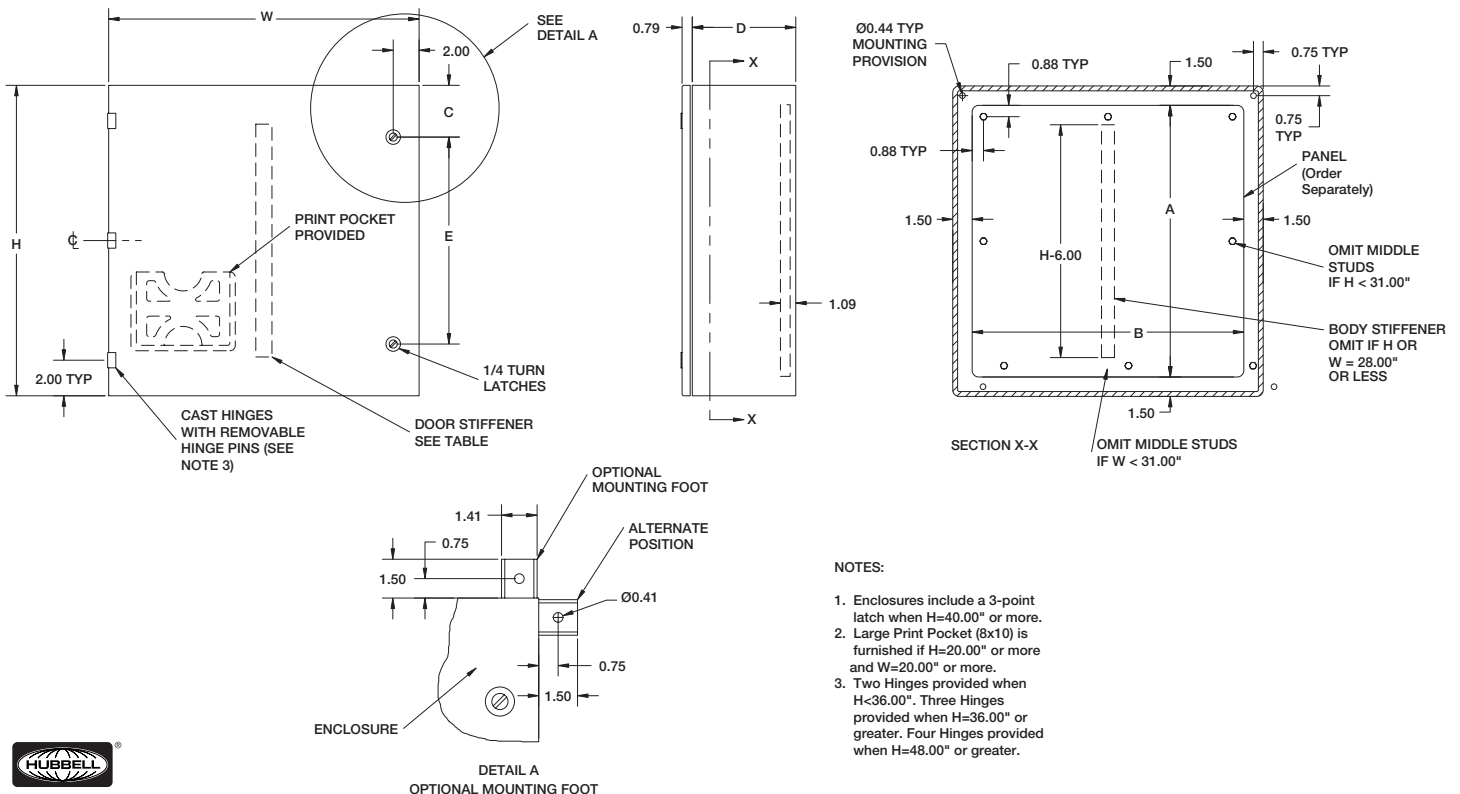
Continued on page D9

N412 SERIES SINGLE DOOR ENCLOSURES (CONT.)							
CATALOG NUMBER	BODY/DOOR STEEL GAUGE	ENCLOSURE SIZE H X W X D	BACK PANEL CATALOG NUMBER*	DOOR STIFFENER	BACK PANEL SIZE A X B	C	E
N412242408	14/14	24.00x24.00x8.00 (610x610x203)	NP2424	No	21.00x21.00 (533x533)	4.00 (102)	16.00 (406)
N412302408	14/14	30.00x24.00x8.00 (762x610x203)	NP3024	No	27.00x21.00 (686x533)	4.00 (102)	22.00 (559)
N412362408	14/14	36.00x24.00x8.00 (914x610x203)	NP3624	No	33.00x21.00 (838x533)	4.00 (102)	28.00 (711)
N412243008	14/14	24.00x30.00x8.00 (610x762x203)	NP3024	No	21.00x27.00 (533x686)	4.00 (102)	16.00 (406)
N412303008	14/14	30.00x30.00x8.00 (762x762x203)	NP3030	No	27.00x27.00 (686x686)	4.00 (102)	22.00 (559)
N412363008	14/14	36.00x30.00x8.00 (914x762x203)	NP3630	No	33.00x27.00 (838x686)	4.00 (102)	28.00 (711)
N412363608 ◀	14/14	36.00x36.00x8.00 (914x914x203)	NP3636	Yes	33.00x33.00 (838x838)	4.00 (102)	28.00 (711)
N412202012	14/14	20.00x20.00x12.00 (508x508x305)	NP2020	No	17.00x17.00 (432x432)	10.00 (254)	—
N412242012 ◀	14/14	24.00x20.00x12.00 (610x508x305)	NP2420	No	21.00x17.00 (533x432)	12.00 (305)	—
N412242412	14/14	24.00x24.00x12.00 (610x610x305)	NP2424	No	21.00x21.00 (533x533)	4.00 (102)	16.00 (406)
N412302412	14/14	30.00x24.00x12.00 (762x610x305)	NP3024	No	27.00x21.00 (686x533)	4.00 (102)	22.00 (559)
N412303012 ◀	14/14	30.00x30.00x12.00 (762x762x305)	NP3030	No	27.00x27.00 (686x686)	4.00 (102)	22.00 (559)
N412362412 ◀	14/14	36.00x24.00x12.00 (914x610x305)	NP3624	No	33.00x21.00 (838x533)	4.00 (102)	28.00 (711)
N412402412	14/14	40.00x24.00x12.00 (1016x610x305)	NP4024	No	37.00x21.00 (940x533)	20.00 (508)	—
N412363012	14/14	36.00x30.00x12.00 (914x762x305)	NP3630	No	33.00x27.00 (838x686)	4.00 (102)	28.00 (711)
N412363612	14/14	36.00x36.00x12.00 (914x914x305)	NP3636	Yes	33.00x33.00 (838x838)	4.00 (102)	28.00 (711)
N412423612	14/14	42.00x36.00x12.00 (1067x914x305)	NP4236	Yes	39.00x33.00 (991x838)	21.00 (533)	—
N412482412** ◀	14/14	48.00x24.00x12.00 (1219x610x305)	NP4824	No	45.00x21.00 (1143x533)	24.00 (610)	—
N412483612**	14/14	48.00x36.00x12.00 (1219x914x305)	NP4836	Yes	45.00x33.00 (1143x838)	24.00 (610)	—
N412603612**	14/14	60.00x36.00x12.00 (1524x914x305)	NP6036	Yes	57.00x33.00 (1448x838)	30.00 (762)	—
N412242416**	14/14	24.00x24.00x16.00 (610x610x406)	NP2424	No	21.00x21.00 (533x533)	4.00 (102)	16.00 (406)
N412363016**	14/14	36.00x30.00x16.00 (914x762x406)	NP3630	No	33.00x27.00 (838x686)	4.00 (102)	28.00 (711)
N412483616**	14/14	48.00x36.00x16.00 (1219x914x406)	NP4836	Yes	45.00x33.00 (1143x838)	24.00 (610)	—
N412242420** ◀	14/14	24.00x24.00x20.00 (610x610x508)	NP2424	No	21.00x21.00 (533x533)	4.00 (102)	16.00 (406)
N412302420** ◀	14/14	30.00x24.00x20.00 (762x610x508)	NP3024	No	27.00x21.00 (686x533)	4.00 (102)	22.00 (559)
N412363020** ◀	14/14	36.00x30.00x20.00 (914x762x508)	NP3630	No	33.00x27.00 (838x686)	4.00 (102)	28.00 (711)

◀ **NEW PRODUCT IN 2003**

*Panels must be ordered separately. **Enclosures are supplied with closed cell neoprene gasket (not foam-in-place).

NOTE: Mounting kits must be installed to maintain the NEMA Types 4, 12, and 13 ratings.



- NOTES:
1. Enclosures include a 3-point latch when H=40.00" or more.
 2. Large Print Pocket (8x10) is furnished if H=20.00" or more and W=20.00" or more.
 3. Two Hinges provided when H<36.00". Three Hinges provided when H=36.00" or greater. Four Hinges provided when H=48.00" or greater.

**NP SERIES BACK PANELS
ACCESSORY PANELS FOR NEMA 1, 3R, 12, 4 & 4X WALL-MOUNTS**

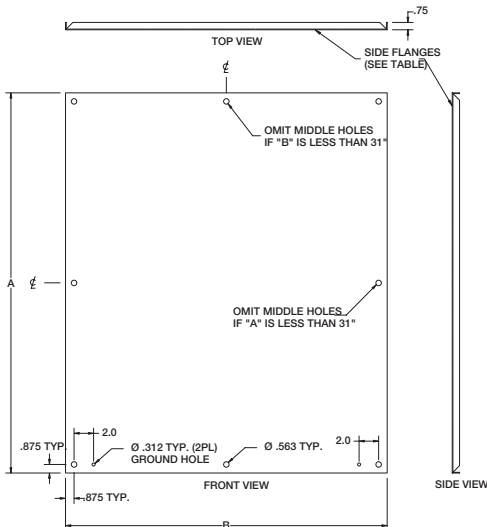


NP1212

FEATURES-SPECIFICATIONS

Description

- Steel and stainless panels are 12 gauge
 - Aluminum panels are 5052-H32 aluminum alloy, .080-inch thick
 - Panel with any side over 17.00" has 3/4" flange on all sides
 - Steel panels are painted white polyester powder
 - Panels fit the following enclosures:
 - NEMA 1, Large (NIC)
 - NEMA 3R, Hinge Cover (RHC, Large)
 - NEMA 4, 412, & 4X Single Door (N12, N4, N412, SSN4)
 - NEMA 12 2-Door Wall-Mount, (WAWF), Single Door
- Right Flange Disconnect (SDN12, ABN12)
Large JIC (B-CH, Large)
Single door N12



BACK PANELS FOR NEMA 1, 3R, 12, 4 & 4X WALL-MOUNT ENCLOSURES			
PAINTED STEEL (WHITE)	CATALOG NUMBER		PANEL SIZE A X B
	316 STAINLESS STEEL	ALUMINUM	
NP1212	—	—	9.00X9.00 (229X229)
NP1224	—	—	9.00X21.00 (229X533)
NP1612	NP1612SSA	ALNP1612	13.00X9.00 (330X229)
NP1616	NP1616SSA	ALNP1616	13.00X13.00 (330X330)
NP1620	—	—	17.00X13.00 (432X330)
NP2012	—	—	17.00X9.00 (432X229)
NP2016	NP2016SSA	ALNP2016	17.00X13.00 (432X330)
NP2024	—	—	21.00X17.00 (533X432)
NP2020	NP2020SSA	ALNP2020	17.00X17.00 (432X432)
NP2412	—	—	21.00X9.00 (533X229)
NP2416	NP2416SSA	—	21.00X13.00 (533X330)
NP2420	NP2420SSA	ALNP2420	21.00X17.00 (533X432)
NP2424	NP2424SSA	ALNP2424	21.00X21.00 (533X533)
NP2430	—	—	27.00X21.00 (686X533)
NP3016	—	—	27.00X13.00 (686X330)
NP3020	NP3020SSA	—	27.00X17.00 (686X432)
NP3024	NP3024SSA	ALNP3024	27.00X21.00 (686X533)
NP3030	NP3030SSA	—	27.00X27.00 (686X686)
NP3036	—	—	33.00X27.00 (838X686)
NP3042	—	—	39.00X27.00 (991X686)
NP3624	NP3624SSA	ALNP3624	33.00X21.00 (838X533)
NP3630	NP3630SSA	ALNP3630	33.00X27.00 (838X686)
NP3636	NP3636SSA	—	33.00X33.00 (838X838)
NP3642	—	—	39.00X33.00 (991X838)
NP4024	—	—	37.00X21.00 (940X533)
NP4224	—	—	39.00X21.00 (991X533)
NP4230	NP4230SSA	—	39.00X27.00 (991X686)
NP4236	NP4236SSA	—	39.00X33.00 (991X838)
NP4824	—	—	45.00X21.00 (1143X533)
NP4830	—	—	45.00X27.00 (1143X686)
NP4836	NP4836SSA	ALNP4836	45.00X33.00 (1143X838)
NP6030	—	—	57.00X27.00 (1448X686)
NP6036	NP6036SSA	ALNP6036	57.00X33.00 (1448X838)
NP7230	—	—	69.00X27.00 (1753X686)
NP7236	—	—	69.00X33.00 (1753X838)